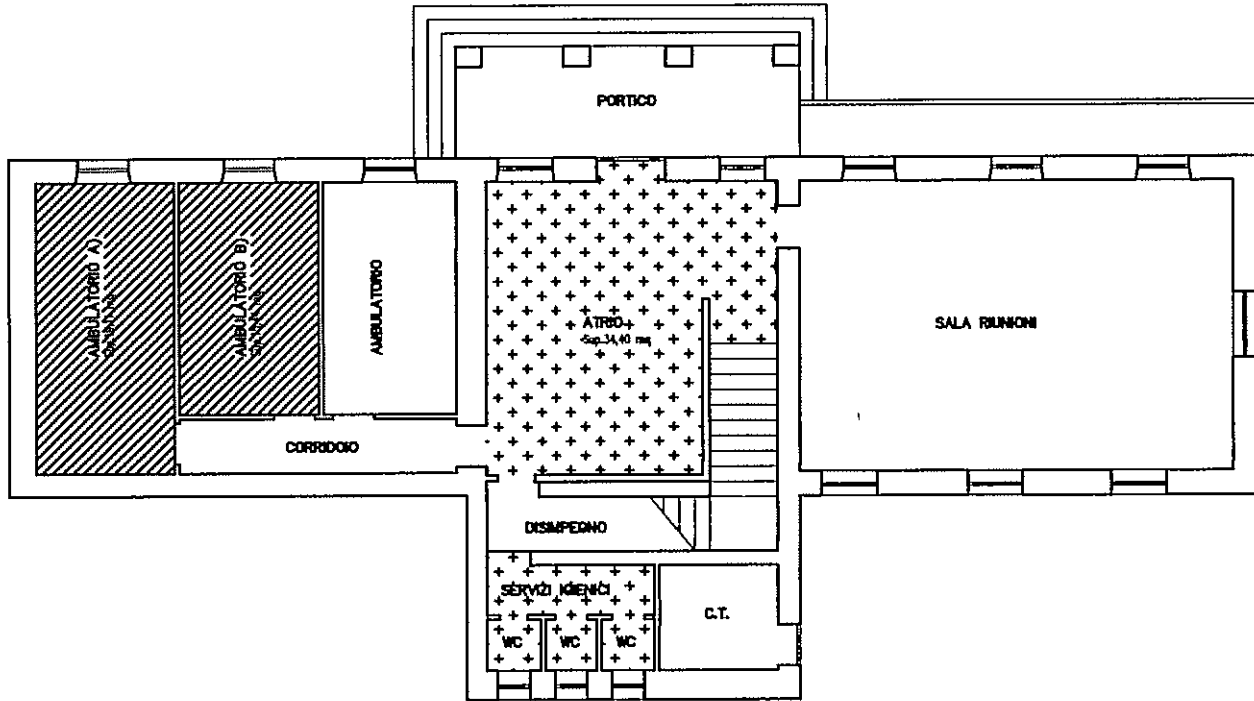


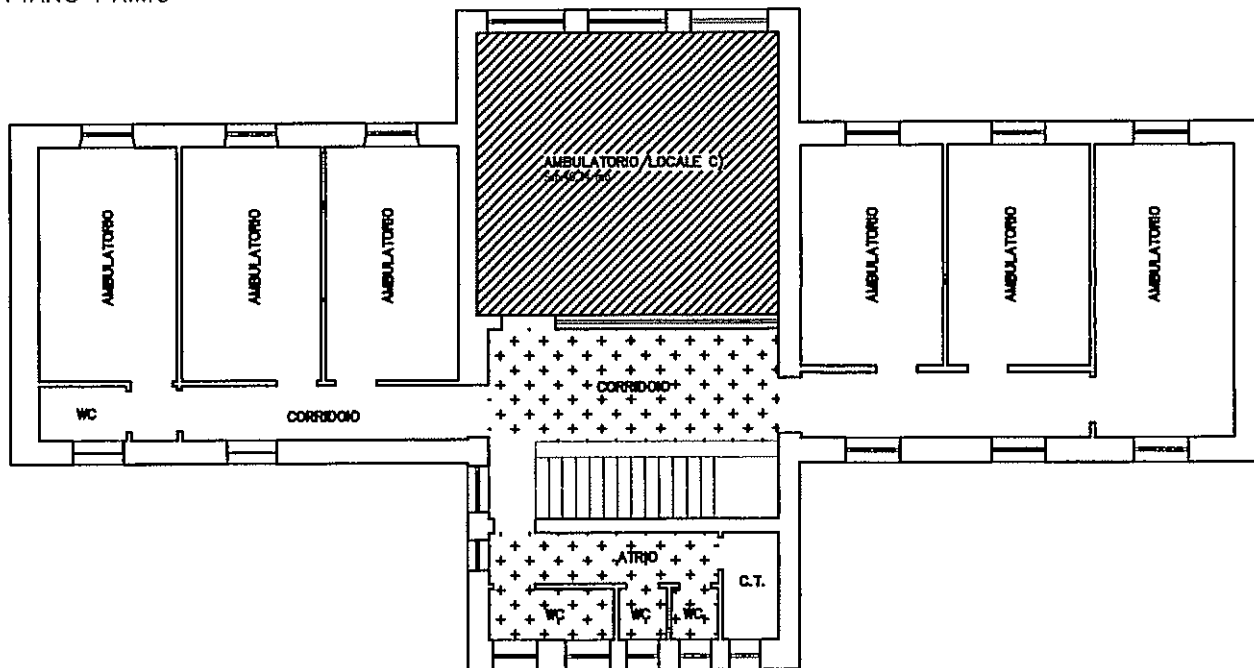
FABBRICATO EX DISTRETTO SANITARIO – VIA ZUGLIANO, 1 – FR. BASALDELLA

FOGLIO 23 MAPPALE 362

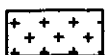
PIANO TERRA



PIANO PRIMO



SPAZI DESTINATI ALLA LOCAZIONE



SPAZI COMUNI (SALA DI ATTESA E SERVIZI IGIENICI)